

New Brunswick Youth Orchestra Audition Materials

2017-2018 Season

- Cello -

Scales

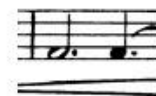
- One scale of the applicant's choice, preferably in three octaves or at least in two octaves with shifting

Solos

- Two contrasting movements or pieces for solo cello or one piece with both contrasting sections

Excerpts

- Tchaikovsky Symphony No. 4, 1st movement, from 1 measure before letter M to mm. 283



Musical score for Cello, Tchaikovsky Symphony No. 4, 1st movement. The score is written in bass clef and includes dynamic markings such as *mf*, *p*, *f*, *sf*, *mf espr.*, and *cresc.* It features various musical notations including slurs, accents, and fingering numbers (1, 0). The score is divided into sections marked with letters M, N, and O.

simile

ff P fff

fff

Q

fff

- Tchaikovsky Symphony No. 4, 1st movement, mm. 120 to letter F

Musical score for Tchaikovsky Symphony No. 4, 1st movement, mm. 120 to letter F. The score is written in 3/8 time and features a key signature of two flats (B-flat and E-flat). The music is marked *cantabile*. The first system shows a melodic line with dynamics *pp* and *p*. The second system continues the melodic line. The third system shows a shorter melodic phrase.

- Tchaikovsky Symphony No. 4, 2nd movement, mm. 352 to mm. 374

Musical score for Tchaikovsky Symphony No. 4, 2nd movement, mm. 352 to mm. 374. The score is written in 3/8 time and features a key signature of two flats (B-flat and E-flat). The music is marked *P* and *mf*. The first system shows a melodic line with dynamics *P* and *mf*. The second system shows a melodic line with dynamics *P*. The third system shows a melodic line with dynamics *pp*.